



**Collins Bay Yacht Club
Kingston, Ontario
2024 Racing Season
SAILING INSTRUCTIONS**

The notation '[NP]' in a rule of the sailing instructions (SIs) means that a boat may not protest another boat for breaking that rule. This changes Racing Rules of Sailing (RRS) 60.1(a).

1 RULES

1.1 The event is governed by the rules as defined in the RRS.

2 CHANGES TO SAILING INSTRUCTIONS

2.1 Any change to the SIs will be posted on the CBYC Official Notice Board by 1700 hrs. for Thursday Night races or by 0830 hrs. for Weekend (Distance) races. Any changes to the SIs must be authorized by the CBYC Race Captain.

2.2 Changes to a SI may be made on the water by the Race Committee through hoisting Code Flag 'L' followed by direct verbal or VHF radio communications to competitors.

3 COMMUNICATIONS WITH COMPETITORS

3.1 Notices to competitors will be posted on the official notice board located at the CBYC Clubhouse (S.S. Maria) and a courtesy copy posted at collinsbaymarine.com/cbyc/racing/.

3.2 The CBYC Race Office may be accessed by contacting the Race Captain at Race@collinsbayyachtclub.ca.

3.3 On the water, the Race Committee intends to communicate with competitors on VHF Channel 6.

3.4 [DP] While racing, from the first warning signal until the end of the last race of the day/evening, except in an emergency, a boat shall not make voice or data transmissions and shall not receive voice or data communication that is not available to all boats.

4 CODE OF CONDUCT

4.1 [DP] Competitors and support persons shall comply with reasonable requests from race officials.

5 SIGNALS MADE ASHORE

5.1 Signals made ashore will be displayed at the flag mast at the CBYC Clubhouse (S.S. Maria).

5.2 When flag AP is displayed ashore, '1 minute' is replaced with 'not less than 45 minutes' in Race Signals AP.

6 SCHEDULE OF RACES

6.1 The following table describes the CBYC handicap race events:

Thursday Night	Date	Weekend (Distance)	Date
Practice	May 9	Amherst Island	June 15
Spring Series	May 16 – June 20	Simcoe Island	July 20
Summer Series	June 27 – Aug. 1	Pigeon Island	Aug. 17
Fall Series	Aug. 8 – Sept. 12	Frostbite	Sept. 28

6.2 A minimum of four races shall be sailed to constitute a series. More than one race a night may be sailed time at the discretion of the Race Committee.

6.3 The scheduled time of the warning signal for Thursday Night races is 1800.

6.4 To alert boats that a race or sequence of races will begin soon, the orange starting line flag will be displayed with one sound at least one minute before a warning signal is made.

7 DIVISION FLAGS

7.1 The 'Division' flags are:

PHRF-LO Division	Division Flag
1 – Flying Sails Rating < 143	Yellow
2 – Flying Sails Rating ≥ 143	Blue
3 – Non-Flying Sails	Red

8 RACING AREA

8.1 The racing area is eastern Lake Ontario and the approaches to Collins Bay.

9 COURSES

9.1 Addendum 1 describes the location of CBYC's Thursday Night race marks.

9.2 Addendum 2 Supplemental Sailing Instructions for Thursday Night races.

9.3 Addenda 3, 4, 5 and 6 Supplemental Sailing Instructions for Weekend

(Distance) races.

9.2 No later than the warning signal, the Race Committee will display the course configuration placards on the Signal Boat.

10 MARKS

10.1 Marks are yellow spar buoys (private), orange and yellow inflatable marks and red and green Coast Guard navigational buoys.

11 OBSTRUCTIONS

11.1 [DP] [NP] There are several wreck dive sites in the racing area. The Canada Shipping Act requires boats to remain well clear of any vessel displaying a "Diver Down" flag.

12 THE START

12.1 Races will be started using RRS 26 with the warning signal made 5 minutes before the starting signal.

12.2 'Divisions' of 5 or more boats are eligible for separate starts. If an insufficient number of boats are registered for a 'Division', starts may be combined at the discretion of the CBYC Race Captain.

12.3 The starting line is between the Signal Boat flying an Orange Flag and an orange or yellow inflatable mark.

12.4 Boats whose warning signal has not been made shall avoid the starting area during the starting sequence for other races.

12.5 If any part of a boat's hull is on the course side of the starting line during the two minutes before her starting signal and she is identified, the race committee will attempt to broadcast her sail number on VHF channel 6. Failure to make a broadcast or to time it accurately will not be grounds for a request for redress. This changes RRS 62.1(a).

12.6 A boat that does not start within 5 minutes after her starting signal will be scored Did Not Start (DNS) without a hearing. This changes RRS A5.1 and A5.2.

13 THE FINISH

13.1 If the Race Committee is absent when a boat finishes, she shall report her finishing time, and her position in relation to nearby boats, to the Race Captain at Race@collinsbayyachtclub.ca. at the first reasonable opportunity.

14 PENALTY SYSTEM

14.1 For the all 'Divisions', RRS 44.1 applies.

15 TIME LIMITS

15.1 Race Time Limits are specified in Addenda 2, 4, 5 and 6.

16 HEARING REQUESTS

16.1 Protests/requests for redress shall be submitted to

Race@collinsbayyachtclub.ca twenty-four hours after the last boat finishes the last race of the day or the Race Committee signals no more racing today, whichever is later.

16.2 Hearing request forms are available from the race office at collinsbaymarine.com/cbyc/racing/.

16.3 Notices will be posted no later than seventy-two hours after the protest time limit to inform competitors of hearings in which they are parties or named as witnesses. Hearings will be held virtually or in the CBYC Clubhouse (S.S. Maria) located at Collins Bay Marina, at mutually convenient date and time.

16.4 RRS 62.2(a) and 66.2(a) do not apply.

17 SAFETY REGULATIONS

17.1 [DP] A boat that retires from a race shall notify the Race Committee at the first reasonable opportunity.

18 OFFICIAL VESSELS

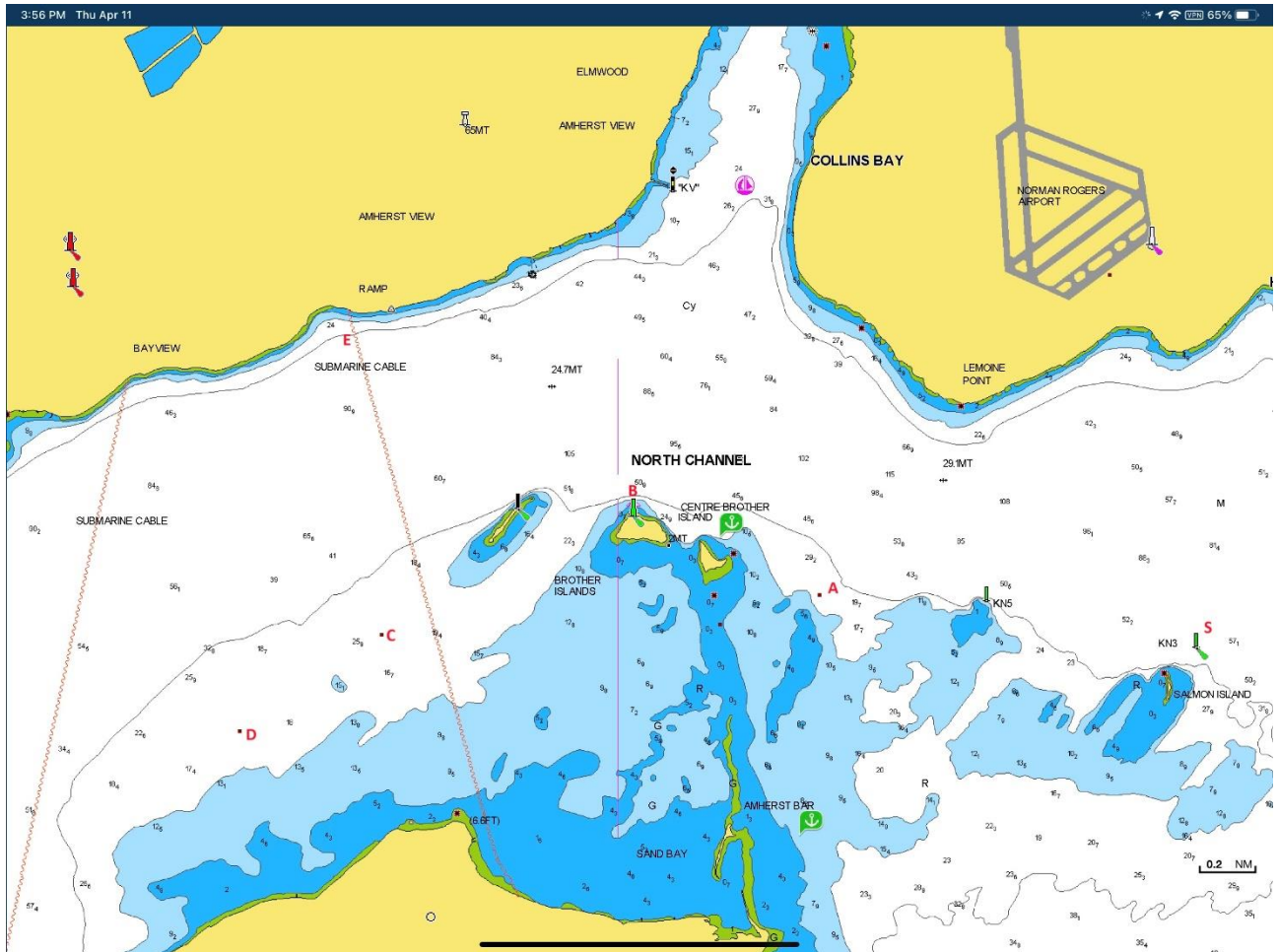
18.1 The CBYC 'Signal Boat' for all Thursday Night Races is "Reliance". Other vessels may be designated CBYC Signal Boat at the discretion of the CBYC Race Captain.

19 TRASH DISPOSAL

19.1 Trash shall be kept aboard competing boats until appropriately disposed of on-shore.

Addendum 1

CBYC Thursday Night Race Marks*



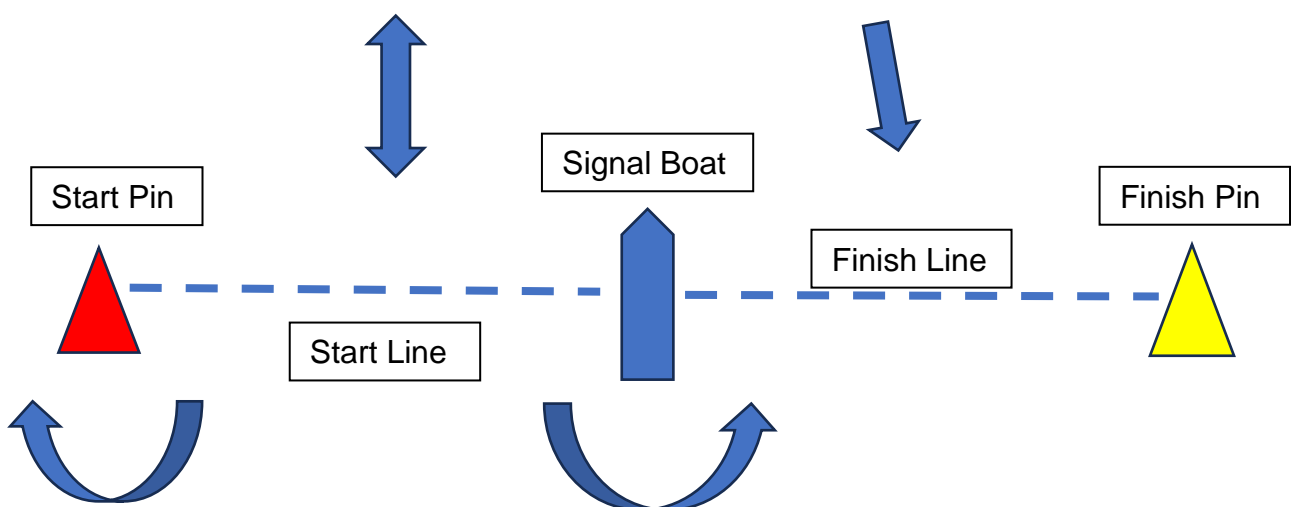
***Not to be used for navigational purposes.**

CBYC Race Marks 2024		
Race Mark	Latitude	Longitude
A	44 ⁰ 12.23' N	76 ⁰ 37.00' W
B	44 ⁰ 12.48' N	76 ⁰ 37.85' W
C	44 ⁰ 12.12' N	76 ⁰ 38.69' W
D	Not Used	
E	44 ⁰ 12.98' N	76 ⁰ 39.08' W
S	44 ⁰ 12.05' N	76 ⁰ 35.39' W

Addendum 2

Supplemental Sailing Instructions - Thursday Night Races

- 1 Courses
 - 1.1 Courses will be set by the Race Committee.
 - 1.2 [NP] Course configuration shall not be grounds for protest.
 - 1.3 The Start Line will be between the Signal Boat and an orange or yellow inflatable 'Start Pin'.
 - 14.1 The finish line will be between the Signal Boat flying a Blue Flag and a separate orange or yellow inflatable 'Finish Pin' unless the Race Committee, owing to fleet size, elects to combine the Start and Finish Lines.
 - 1.4 The Warning Signal for each start shall be made with or after the starting signal of the preceding start.
 - 1.5 Course will be posted on the Signal Boat by placard read from left to right. Green placards indicate race marks to be left to starboard and red placards indicate race marks to be left to port.
 - 1.6 'F' will be used to denote the Finish Mark, 'P' the 'Start Pin', 'G' a leeward gate comprising the 'Start Pin' and the Signal Boat, 'W' a windward Drop Mark and 'S' the Salmon Island Coast Guard navigational buoy (KN3).
- 2 Time Limit
 - 2.1 The time limits for all Divisions are as follows:
 - a) for races prior to Aug. 2030 hrs.
 - b) for races during Aug. 2000 hrs.
 - c) for races during Sept. 1930 hrs.



Addendum 3

Supplemental Sailing Instructions - Weekend (Distance) Races

- 1 Courses
 - 1.1 The time of the Warning Signal will be confirmed at the Skippers' Meeting which will be held at 0900 hrs. at the CBYC Club House (S.S. Maria).
 - 1.2 Unless otherwise specified at the Skippers' Meeting, there will be one start for all Divisions.
- 2 Race Committee
 - 2.1 The Signal Boat will be identified at the Skippers' Meeting on the day of the race.
 - 2.2 A boat acting as the Signal Boat for a Weekend (Distance) Race may choose to race. If the Signal Boat races, it will announce its intention to do so at the Skippers' Meeting.
 - 2.3 The Frostbite Race course will be determined at the Skippers' Meeting on the day of the event.

Addendum 4

Supplemental Sailing Instructions - Amherst Island Race

- 1 Start
 - 1.1 The Start Line will be between an inflatable mark and the Signal Boat or two inflatable marks at the mouth of Collins Bay.
- 2 Course
 - 2.1 The course is counterclockwise around Amherst Island leaving the following to port:
 - KM6
 - KM4
 - Grape Island
 - KM2
 - K9
 - K8
 - KN3
 - 2.2 The Finish Line will be between an inflatable mark and the Signal Boat or two inflatable marks at the mouth of Collins Bay.
- 3 Shortened Course
 - 3.1 If the lead boat has not passed K9 by 1600 hrs., the race will be finished at K9.
 - 3.2 If the lead boat has not passed K9 by 1800 hrs., the race will be abandoned.
 - 3.3 [NP][DP] The lead boat shall hail the CBYC fleet on VHF Channel 16 and announce on VHF Channel 6 that they have either:
 - a) reached K9 by 1600 hrs., or
 - b) not reached K9 by 1600 hrs., or
 - c) not reached K9 by 1800 hrs.

Addendum 5

Supplemental Sailing Instructions - Simcoe Island Race

- 1 Start
 - 1.1 The Start Line will be between an inflatable mark and the Signal Boat or two inflatable marks at the mouth of Collins Bay.
- 2 Course
 - 2.1 The course is counterclockwise around Simcoe Island as follows:
 - KN3 to starboard
 - K8 to starboard
 - K9 to port
 - Simcoe Island to port
 - KE2 to port
 - KE1 to starboard
 - K3 to port
 - KN2 to starboard
 - 2.2 The 'Finish Line' will be between an inflatable mark and the Signal Boat or two inflatable marks at the mouth of Collins Bay.
- 3 Shortened Course
 - 3.1 If the lead boat has not passed K3 by 1600 hrs., the race will be finished at K3.
 - 3.2 If the lead boat has not passed K3 by 1800 hrs., the race will be abandoned.
 - 3.3 [NP][DP] The lead boat shall hail the CBYC fleet on VHF Channel 16 and announce on VHF Channel 6 that they have either:
 - a) reached K3 by 1600 hrs., or
 - b) not reached K3 by 1600 hrs., or
 - c) not reached K3 by 1800 hrs.

Addendum 6

Supplemental Sailing Instructions - Pigeon Island Race

- 1 Start
 - 1.1 The Start Line will be between an inflatable mark and the Signal Boat or two inflatable marks at the mouth of Collins Bay.
- 2 Course
 - 2.1 The course is clockwise around Pigeon Island as follows:
 - KN5 to starboard
 - KN3 to starboard
 - K8 to starboard
 - K9 to port
 - MH4 to port
 - Pigeon Island to starboard
 - K9 to starboard
 - K8 to port
 - KN3 to port
 - KN5 to port
 - 2.2 The Finish Line will be between an inflatable mark and the Signal Boat or two inflatable marks at the mouth of Collins Bay.
- 3 Shortened Course
 - 3.1 if the lead boat has not passed K9 by 1600 hrs., the race will be finished at K9.
 - 3.2 if the lead boat has not passed K9 by 1800 hrs., the race will be abandoned.
 - 3.3 [NP][DP] The lead boat shall hail the CBYC fleet on VHF Channel 16 and announce on VHF Channel 6 that they have either:
 - a) reached K9 by 1600 hrs., or
 - b) not reached K9 by 1600 hrs., or
 - c) not reached K9 by 1800 hrs.