



Long Point Challenge

June 15, 2019
Collins Bay Yacht Club
Kingston, Ontario

SAILING INSTRUCTIONS

1 RULES

- 1.1. The regatta will be governed by the rules as defined by the [2017 - 2020 World Sailing Racing Rules of Sailing](#).
- 1.2. The prescriptions of Sail Canada will apply. These prescriptions can be found at:
https://www.sailing.ca/files/RRS_2017_2020_Sail_Canada_Prescription_Final_EN.pdf
- 1.3. If there is a conflict between languages the English text will take precedence.

2 NOTICES TO COMPETITORS

Notices to competitors will be posted on the official notice board(s) located at the Collins Bay Yacht Club clubhouse, the S.S. Maria.

3 CHANGES TO SAILING INSTRUCTIONS

Any change to the sailing instructions will be posted before 0900 on June 15, 2019

4 SIGNALS MADE ASHORE

- 4.1. Signals made ashore will be displayed at the CBYC clubhouse, S.S. Maria.
- 4.2. When flag AP is displayed ashore, '1 minute' is replaced with 'not less than 60 minutes' in the race signal AP.

5 SCHEDULE OF RACES

- 5.1. Date of racing: June 15, 2019 for all classes.
- 5.2. The scheduled time of the skippers meeting for the race day is 0900.
- 5.3. The scheduled time of the first signal for the race day is 1030.
- 5.4. After a long postponement, to alert boats that the race will begin soon, the AP flag will be displayed with one sound for at least one minute before a warning signal is displayed.

6 DIVISION FLAGS

Division flags will be assigned at the skippers meeting.

7 RACING AREAS

Attachment A shows the location of racing area. The line between K8 and Centre Brother Island, and the line between Centre Brother Island and Amherst Island, as shown in Attachment B, are designated as restricted and not part of the Racing Area. Boats shall not cross these lines.

8 THE COURSE

- 8.1. Attachment A shows the course, including the order in which marks are to be passed, and the side on which each mark is to be left. The approximate course length is 107 nautical miles.
- 8.2. **Shortened Course:** If the lead boat has not passed the line passing through K11 and K12 on the return leg (i.e. travelling in an easterly direction) by 1200 hrs on June 16, the race will be shortened – The line passing through K11 and K12 will be the new finish line.
 - 8.2.1. On the return leg each boat will report to the fleet its crossing of the line passing through K11 and K12 via VHF channel 6.

9 MARKS

- 9.1 Mark 1 is K12, at approximately 43°56.02N 76°48.38W. This is a red government navigation mark south of False Ducks Island.
- 9.2 Mark 2 is ODAS 45012 at approximately 43°37.9N 77°24.18W. This is a yellow weather buoy.
- 9.3 The starting mark will be an inflatable orange buoy.
- 9.4 If a shortened course (instruction 8.2) has not been declared the finish line will be between the green and red southernmost private channel navigation buoys in Collins Bay, at approximately 44°14.247N 76°36.871W.

10 THE START

- 10.1 If 4 or more boats are included in any class the start will be as follows:
 - 10.1.1 The starting line will be between the mast on the committee boat at the starboard end and the port-end starting mark, an orange inflatable buoy.
 - 10.1.2 Boats whose warning signal has not been made shall avoid the starting area during the starting sequence for other races.
 - 10.1.3 If any part of a boat's hull, crew or equipment is on the course side of the starting line before her starting signal and she is identified, the race committee will attempt to broadcast her sail number on VHF channel 6 after the starting signal. Failure to make a broadcast will not be grounds for a request for redress. This changes rule 62.1(a).
- 10.2 If less than 4 boats are included in any class the start will be as follows:
 - 10.2.1 The starting line will be between the cardinal mark at approximately 44°13.453N 76°37.637W and an orange inflatable mark at approximately 44°13.283N 76°37.185W
 - 10.2.2 The starting area will be on the north side of the start line
 - 10.2.3 Boats will cross the start line heading north to south
 - 10.2.4 The starting sequence flags and signals will be displayed by a competing boat designated as the race committee boat at the skippers' meeting

11 THE FINISH

- 11.1 If a shortened course (instruction 8.2) has not been declared the finish line will be between the green and red southernmost private channel navigation buoys in Collins Bay, at approximately 44°14.247N 76°36.871W.
- 11.2 Racing boats shall record their finish time. If a Committee Boat is not on station at the finish, the skipper shall report the finish time to the Race Officer (lpc@collinsbayyachtclub.ca) within 24 hours of finishing; otherwise the boat will be scored DNF.

12 PENALTY SYSTEM

For all divisions rules 44.1 and 44.2 are changed so that only one turn, including one tack and one gybe, is required when the spinnaker has been hoisted and is in use during the infraction.

13 PROTESTS AND REQUESTS FOR REDRESS

- 13.1 The official protest posting location will be at <http://collinsbaymarina.com/cbyc/racing/long-point-challenge/>
- 13.2 Protest forms are available at the race office, located at the S.S. Maria, and at the posting location. Protests and requests for redress or reopening shall be delivered to the Race Officer by hand or email (lpc@collinsbayyachtclub.ca) within the appropriate time limit.
- 13.3 For each division, the protest time limit is 24 hours after the last boat in the respective division has finished the race.

- 13.4 Notices will be posted no later than 24 hours after the protest time limit to inform competitors of hearings in which they are parties or named as witnesses. Hearings will be held as soon as possible. All involved persons will be contacted by email.
- 13.5 Notices of protests by the race committee or protest committee will be posted to inform boats under rule 61.1(b). Competitors involved will be contacted by email. A list of boats that have been penalized for breaking rule 42 will be posted.
- 13.6 Breaches of instructions 10, 15, 16, 19 and 22 will not be grounds for a protest by a boat. This changes rule 60.1(a). Penalties for these breaches may be less than disqualification if the protest committee so decides. The scoring abbreviation for a discretionary penalty imposed under this instruction will be DPI.
- 13.7 A request for reopening a hearing shall be delivered no later than 24 hours after the requesting party was informed of the decision. This changes rule 66.
- 13.8 Decisions of the protest committee will be final as provided in rule 70.5.

14 SCORING

PHRF-LO handicaps (Time-on-Time method) will be used to calculate the finish times. A boat must have a valid PHRF-LO certificate to be scored.

15 SAFETY REGULATIONS

- 15.1 All boats shall check in with the committee boat prior to the start.
- 15.2 All boats shall complete a sail plan. This plan shall be filed with the Canadian Coast Guard, Prescott station and the Race Officer (lpc@collinsbayyachtclub.ca). A sail plan template can be found in Appendix C
- 15.3 All boats shall either: a) maintain a call-in schedule with the Canadian Coast Guard, Prescott station; or b) carry a functioning and reporting GPS-based tracking device (SPOT, inReach, or similar)
- 15.4 A boat that retires from the race shall notify the race committee by VHF (Jeannie), email (lpc@collinsbayyachtclub.ca), or text (613-329-4127) as soon as possible.
- 15.5 Every crew member that is on deck between sunset and sunrise shall wear a personal floatation device.
- 15.6 Boats are expected to comply with the [World Sailing Offshore Special Regulations \(Category 3\)](#) with the following changes:
- 15.6.1 OSR (Category 3) 3.08.02 – The requirement for labelling will not be enforced.
- 15.6.2 OSR (Category 3) 3.14.6 c – The requirement that stainless steel lifelines not be coated will not be enforced.
- 15.6.3 OSR (Category 3) 3.27.2 – The requirement that navigation lights will not be mounted below deck level will not be enforced, provided that appropriate navigation lights are also mounted in accordance with OSR (Category 3) 3.27.

16 EQUIPMENT AND MEASUREMENT CHECKS

A boat or equipment may be inspected at any time for compliance with the sailing instructions. Measurement and inspection will only be at the discretion of the Organizing Authority.

17 ADVERTISING

Boats shall display advertising supplied by the organizing authority. Any displays will be discussed with the competitors prior to the event.

18 OFFICIAL BOATS

The committee boat will be announced at the skippers meeting.

19 RADIO COMMUNICATION

Each yacht may communicate with any person, competitor, yacht or outside source of information available using any means available throughout the race.

20 PRIZES

Prizes will be given as follows:

Brule Trophy – Best Corrected time

Flags for 1st, 2nd and 3rd place in each division. There must be at least one more competitor in the division than the number of flags being awarded.

Other prizes may be offered.

21 DISCLAIMER OF LIABILITY

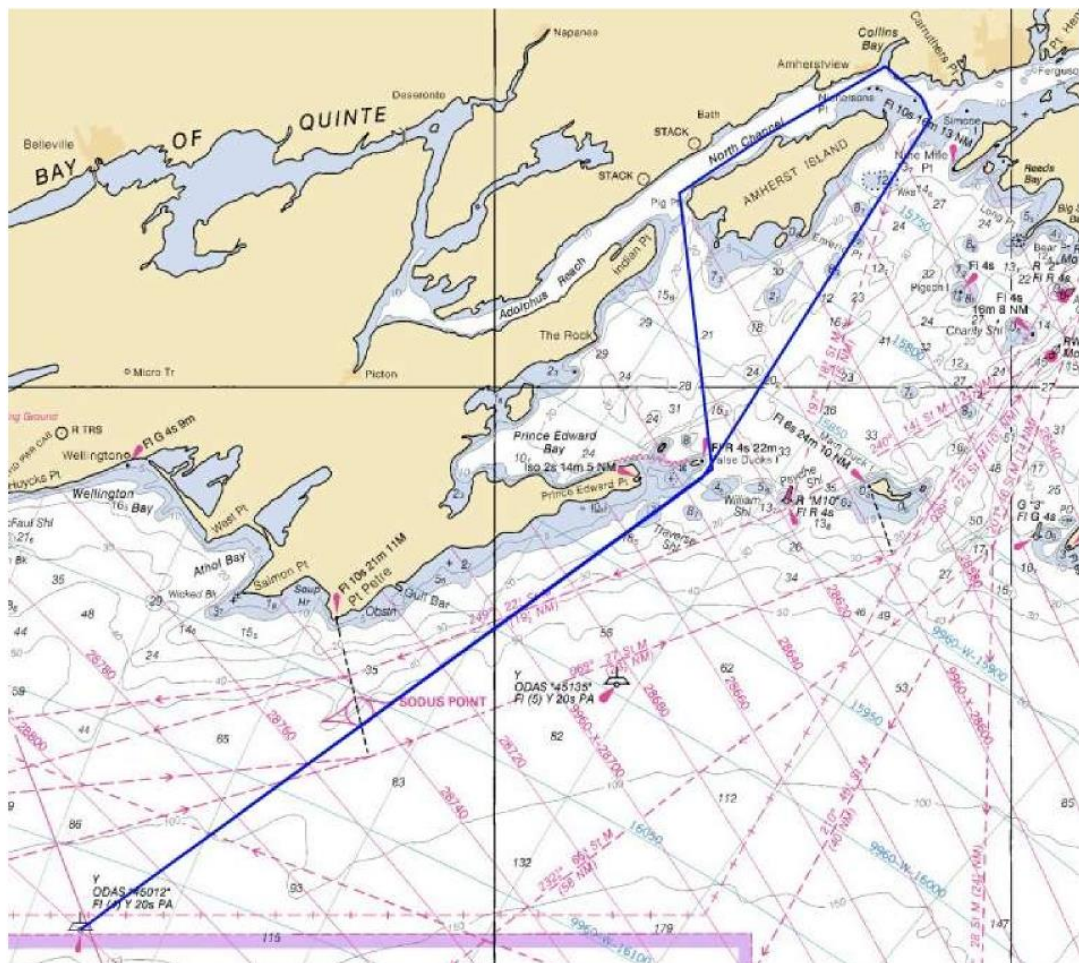
Competitors participate in the regatta entirely at their own risk. See rule 4, Decision to Race. The organizing authority will not accept any liability for material damage or personal injury or death sustained in conjunction with or prior to, during, or after the regatta.

22 INSURANCE

Each participating boat shall be insured with valid third-party liability insurance with a minimum cover of Two Million Dollars (Canadian funds) per event or the equivalent.

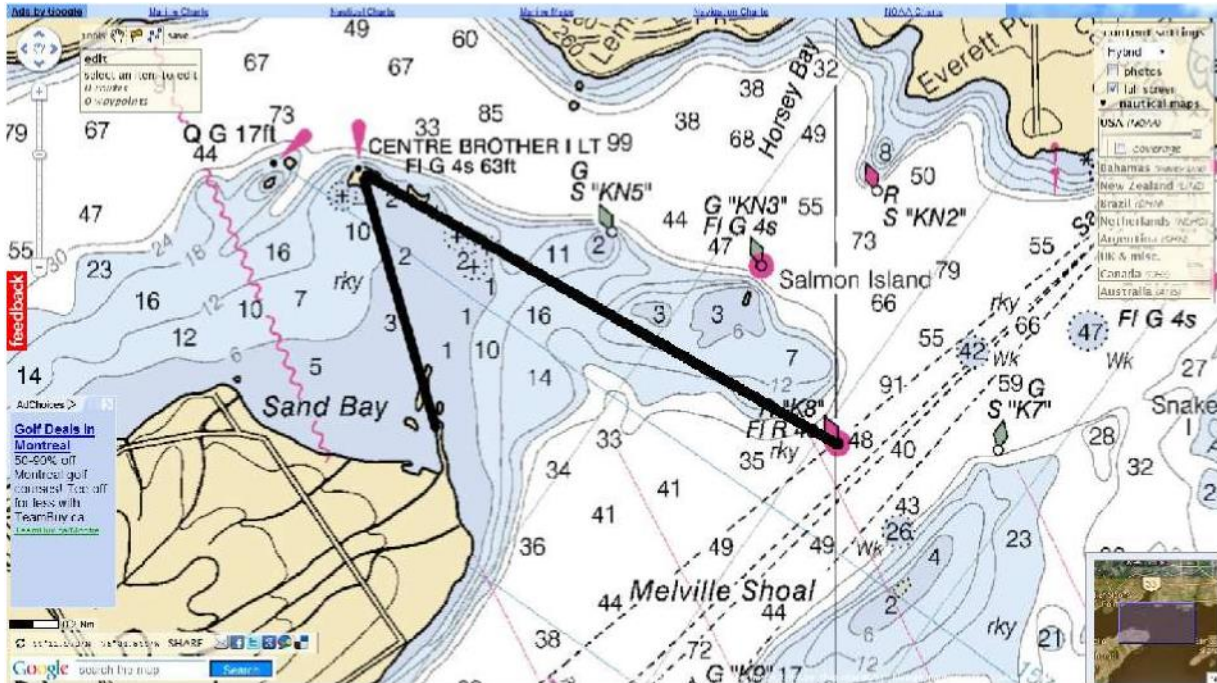
Appendix A – The Course

Mark	Description	Leave To
Start	As in 10 above: Orange inflatable mark and mast on the committee boat or Orange inflatable mark and cardinal mark at approximately 44°13.416N 76°37.647W	Between
Mark One	K12, red navigation mark, at approximately 43°56.02N 76°48.38W	Starboard
Mark Two	ODAS 45012, yellow weather mark, at approximately 43°37.9N 77°24.18W	Port
Mark One	K12, red navigation mark, at approximately 43°56.02N 76°48.38W	Port
Finish	Private red and green channel navigation marks, at approximately 44°14.247N 76°36.871W	Between



Appendix B – Designated Restricted Area

The line between K8 and Centre Brother Island, and the line between Centre Brother Island and Amherst Island are designated as restricted and not part of the Racing Area. Boats shall not cross these lines.



Appendix C – Sail Plan Template

Long Point Challenge

Collins Bay Yacht Club
Kingston, Ontario

File and open with Prescott Coast Guard MCTS Operations

Fax: (613) 925-4519

MMSI: 003160029

E-mail: notshipC&A@dfo-mpo.gc.ca

Owner/Vessel Information:

Vessel name:

Vessel licence number or registration:

Captain's Name:

Address:

Telephone:

Vessel type: sail

Make, Model and size:

Sail Number:

Colour:

Hull:

Deck:

Cabin:

Trim:

Canvas:

Type of engine(s):

Other distinguishing features:

Communications:

Radios, channels monitored: VHF:

HF:

CB:

MMSI:

Cellular 1:

Cellular 2:

Other:

Safety Equipment:

Life rafts (type, size, colour):

Dinghy (type, size, colour):

Flares (number/type):

Lifejackets (number/colour):

EPIRB/Tracking Device:

Other:

Emergency Contacts:

1. Name:

Telephone:

2. Name:

Telephone:

Important Trip Data:

Long Point Challenge Race, Collins Bay Yacht Club

Race Officer and Primary Contact – Geoffrey Roulet: 613-305-3348

Leaving from: Collins Bay Marina

Going to: Collins Bay Marina

Date: June 15, 2019

Time: 1030

Planned Date/Time of arrival: June 16, 2019, ETA:

Proposed route: Collins Bay --> Prince Edward Point-->ODAS 45012--->return

Number on board:

Names of people on board:

Position Reports:

Scheduled Communications:

or

Tracking Device (website URL):

Sail Plan opening (telephone/VHF):

Sail Plan closing (telephone/VHF):